

# BOMBO'S POND

ACRES-ID: 12043  
Address: US Highway 95 south of Beatty  
Beatty, NV 89003  
APN: Parts of 018-361-01, 018-361-04, and  
018-371-06  
County: Nye  
Latitude: 36° 53' 20.87" N  
Longitude: 116° 45' 27.19" W  
Size: 310 acres

**History:** Portions of the site were developed as prospect pits and mine adits. The site was also used as a former quarry operation to support construction of nearby roadways.

**Environmental Work:** A Phase I Environmental Site Assessment was completed in 2005, which concluded that further assessment was necessary to determine if environmental cleanup was required.

**Existing Condition:** The site is primarily vacant land with several abandoned mines on and around the property. A small pond has formed in the remains of the former quarry operation.

**Future Use:** Nye County is exploring opportunities to work with the Bureau of Land Management and the Bureau of Reclamation to ensure local mines in the area are closed to protect the safety of individuals who may use the site for recreational purposes. The Town of Beatty has discussed developing the site as greenspace and perhaps stocking the pond as a local fishing hole. This property requires further study to ensure the water quality is sufficient to support aquatic life and does not have any contaminants that may endanger the health of individuals who may consume the fish.

## Nye County Contact:

For current county contact information, please visit [www.rdsbc.org/contact-us/](http://www.rdsbc.org/contact-us/)

Cooperative Agreement Number: BF97942701

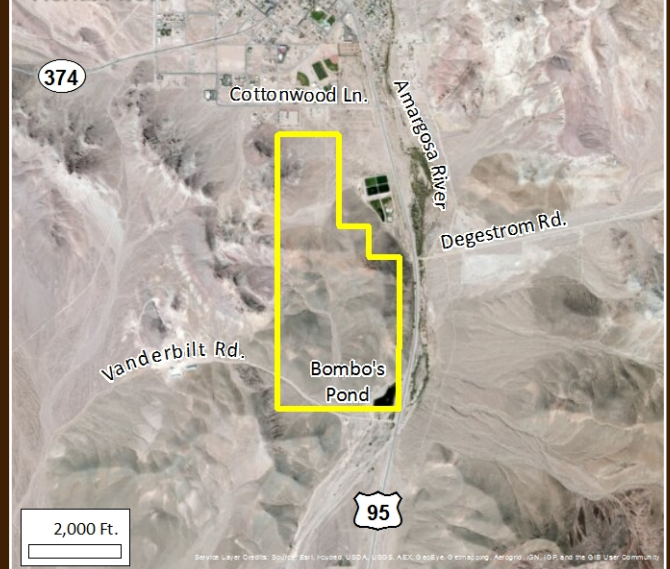
Nye County is a member of the Rural Desert Southwest Brownfields Coalition (RDSBC) along with Esmeralda, Lincoln, Mineral, and White Pine Counties, NV, and Inyo County, CA.

<http://www.rdsbc.org/>

Bombo's Pond Photo



Aerial Photo



Location within Nye County

