

# TONOPAH FBO BUILDING

ACRES-ID: 170164  
Address: 1 Airport Road  
Tonopah, NV 89048  
APN: 012-471-03  
County: Nye  
Latitude: 38° 3' 48.57" N  
Longitude: 117° 5' 47.69" W  
Size: 0.75 acres within a 2,171 acre parcel

**History:** The site was first developed in the 1940s as the operations building for the Tonopah Army Air Field. Nye County has owned and operated the facility as a general aviation airport since July 29, 1949. Desert Flying Services has leased the fixed base operations building since 1975.

**Environmental Work:** A Phase I Environmental Site Assessment (ESA) was completed in February 2014. A Phase II ESA was completed in May 2014 and determined asbestos containing materials, lead-based paint, total petroleum hydrocarbons and volatile organic compounds were present. An Analysis of Brownfield Cleanup Alternatives (ABCA) and Cleanup and Reuse Plan was completed in September 2014 to determine the most effective cleanup alternative. A Biological Evaluation was conducted in August 2017 to assess potential effects of the demolition of the building and associated actions on species listed under the Endangered Species Act (ESA) and critical habitat. Environmental reports are available upon request.

**Existing Condition:** The portion of the site assessed includes the FBO Buildings, Federal Aviation Administration support buildings, and a storage shed.

**Future Use:** Nye County is planning demolition activities for the current buildings and plans to replace them with new, upgraded facilities as part of its Tonopah Airport revitalization initiative.

### Nye County Contact:

For current county contact information, please visit [www.rdsbc.org/contact-us/](http://www.rdsbc.org/contact-us/)

**RURAL DESERT  
SOUTHWEST BROWNFIELDS  
COALITION**

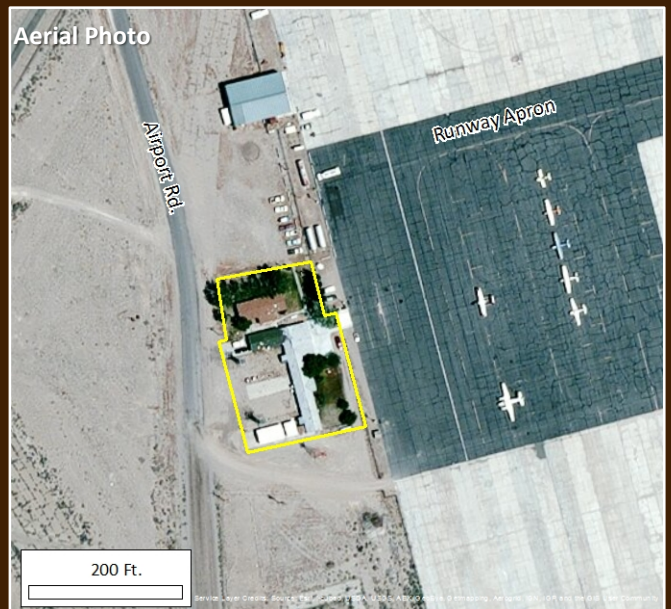
The Rural Desert Southwest Brownfields Coalition (RDSBC) is comprised of Esmeralda, Lincoln, Mineral, Nye and White Pine Counties, NV, and Inyo County, CA.

<http://www.rdsbc.org/>

Tonopah FBO Building Photo



Aerial Photo



Location within the RDSBC

