

# BEATTY MUNICIPAL AIRPORT

ACRES-ID: 103583  
Address: Vanderbilt Road  
Beatty, NV 89003  
APN: 018-021-02 and 018-021-07  
County: Nye  
Latitude: 36° 51' 40.10" N  
Longitude: 116° 47' 09.97" W  
Size: 460 acres

## History:

Two parcels make up the Beatty Municipal Airport site. The property was developed as an airport prior to 1949, with a portion of the site developed as a mining camp prior to 1954. The mining camp was subsequently abandoned.

## Environmental Work:

A Phase I Environmental Site Assessment was completed in June 2009, which found an unregulated underground storage tank as well as possible contamination from asbestos. Further environmental assessment was recommended. In 2012, Nye County Public Works removed the identified underground storage tanks. Resulting soil tests revealed no petroleum contamination from the tanks.

## Existing Condition:

The property is a general aviation airport and hosts Great Basin Soaring, a small office building, and a private aircraft hangar.

## Future Use:

The County is exploring opportunities to expand aviation and associated commercial services at the airport.

## Nye County Contact:

Amy Fanning  
775-751-7091  
Email: [afanning@co.nye.nv.us](mailto:afanning@co.nye.nv.us)

Cooperative Agreement Number: BF96953701

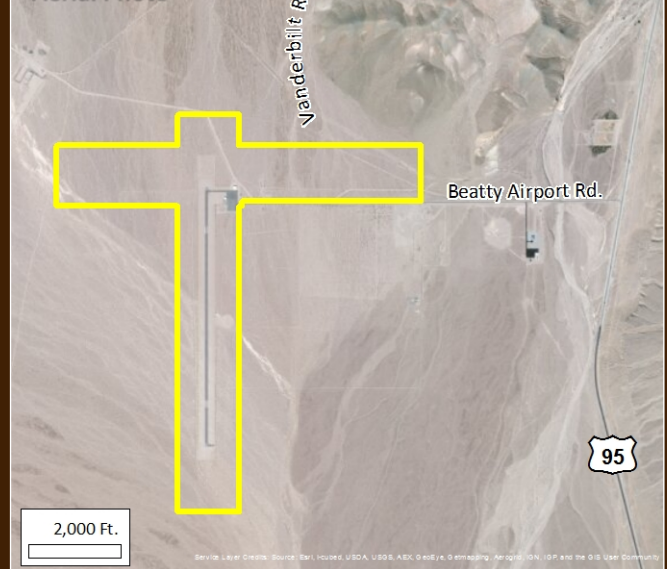
Nye County is a member of the Rural Desert Southwest Brownfields Coalition (RDSBC) along with Esmeralda, Lincoln, and White Pine Counties, NV, and Inyo County, CA.

<http://www.rdsbc.org/>

Beatty Municipal Airport Photo



Aerial Photo



Location within Nye County

