

BEATTY MUNICIPAL AIRPORT

ACRES-ID: 103583
Address: Vanderbilt Road
Beatty, NV 89003
APN: 018-021-02 and 018-021-07
County: Nye
Latitude: 36° 51' 40.10" N
Longitude: 116° 47' 09.97" W
Size: 460 acres

History:

Two parcels make up the Beatty Municipal Airport site. The property was developed as an airport prior to 1949, with a portion of the site developed as a mining camp prior to 1954. The mining camp was subsequently abandoned.

Environmental Work:

A Phase I Environmental Site Assessment was completed in June 2009, which found an unregulated underground storage tank as well as possible contamination from asbestos. Further environmental assessment was recommended. In 2012, Nye County Public Works removed the identified underground storage tanks. Resulting soil tests revealed no petroleum contamination from the tanks.

Existing Condition:

The property is a general aviation airport and hosts Great Basin Soaring, a small office building, and a private aircraft hangar.

Future Use:

The County is exploring opportunities to expand aviation and associated commercial services at the airport.

Nye County Contact:

For current county contact information, please visit www.rdsbc.org/contact-us/

Cooperative Agreement Number: BF96953701

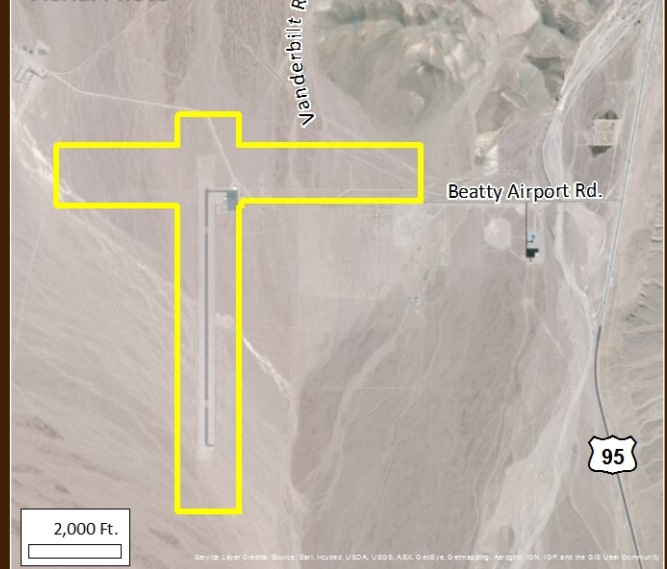
Nye County is a member of the Rural Desert Southwest Brownfields Coalition (RDSBC) along with Esmeralda, Lincoln, Mineral, and White Pine Counties, NV, and Inyo County, CA.

<http://www.rdsbc.org/>

Beatty Municipal Airport Photo



Aerial Photo



Location within Nye County

